

PRODUCT CATALOGUE

Surgical & Prosthesis Guide



B O N S A T E B

بُن سا طب پارسینا

naxis[®]
implants

www.naxisimplant.com

TABLE OF CONTENTS



BONSATEB
بُن سا طب پارسینا

7	NX30 IMPLANT		34	PLASTIC BURNOUT & TI-BASE PB ABUTMENT	
14	FREEFORM ABUTMENT		38	LOCATORS	
18	ANTIROTATIONAL SHOULDER ABUTMENT		42	TRANSFERS	
22	ANGULAR SHOULDER ABUTMENT 15° & 25°		45	IMPLANT ANALOG	
26	STRAIGHT MULTI-UNIT		46	HEALING CAPS	
30	ANGULAR MULTI-UNIT 17° & 30°		50	SURGICAL KIT	
			55	INSTRUMENTS	



NAXIS IMPLANT COMPANY

We are very proud to introduce German precision and excellence in our dental implants. Naxis is one of the well experienced implant, restorative and regenerative dentistry more than 8 years. in collaboration with clinics, institutes and universities, Naxis field experience, develops and manufactures dental implants, instruments, for use in tooth replacement and restoration. Recent technological advancements are providing a revolution in dentistry. The intelligent, well thought out implant systems are being used successfully around the world. Naxis provides a wide range of products and solutions for both surgeons and comfort of the patients. We manufacture with passion for quality and desire to achieve the best patient outcomes. Surgeon and field experience-based feedback are our innovative engines. precision technology of manufacturing and multilevel processing of implants surface their reliable osseointegration has been achieved. We are very serious and have strict rules on our distributors and agents, aiming to give the best service to the dentists. In this frame our highly skilled and motivated team well of experience in business partnering, training and education, and is dedicated to providing global support.

OUR PHILOSOPHY

Love, Vision, Research, Solution, Plan, Discipline

We are tied to our job with love

We believe in that; "The only way to do great work and achieve good results is to love what you do" By doing this, you can improve yourself and accomplish.

in order to advance, we take in consideration customer's own perspective

We are trying to evaluate ourselves by looking from the perspective of our customers. By doing this we can understand our mistakes and make it right also we can upgrade our positive and good sides. When we work on our customer requests, we consider their positive and negative assessments about us and we describe that process as a "Company development".

We generate solutions

Process of production is more difficult than assumed. We face different kinds of problems while working on customer requests. We focus on how to solve questions, that's why we can generate different solutions to production and post purchase services.

We are working systematically and disciplined

Our company believes that idea; if you want to be successful in the production or sale area, you need to work disciplined, hang tough, make and stick to the plan, no matter what your circumstances are..

Each order which we receive, we plan every process and we pay strict attention to workers to stick to that plan till the end.

We are looking forward to see and meet with you.



QUALITY

Quality is not a goal to be achieved, but a process that needs to be developed and maintained continuously. For this purpose; With an awareness of responsibility towards our patients and dentists; maintain and constantly improve the quality level of the services it offers in order to best serve the patient from the beginning until the end of the treatment.

To provide safe, effective and quality implants to our patients; to serve with products with approved quality standards according to CE and ISO standards.

Aiming at patient and doctors' satisfaction; To ensure and increase the satisfaction of our patients and Dentists' with our product quality and technical support in order to provide our patients with the most clinically effective treatments. to extend even more our patients' numbers with a good reputation in our patient's mind. To improve the internal communication among our team of doctors, and the complete administration in the practice in order to improve the service we offer and to increase efficiency.

To increase our productivity by working in mutual cooperation and trust with our companies and universities, clinics and dentists with whom we have business relations,

Continuously improve all processes that affect the success of our company and the quality of our products,

To increase the individual contributions and skills of our employees through continuous training,

To ensure the participation of all our employees in our continuous development with the conscious participation of our employees with high motivation and determination to succeed,

To be a leading company in the sectors it works with its quality and service understanding and to maintain this,

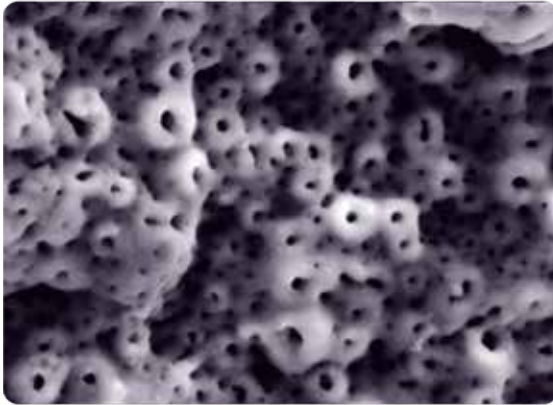
Continuously improve the Quality Management System, to ensure the continuation of the standard requirements, to fully comply with the official and legal requirements

STERILITY

All production of **Naxis Implants** is thoroughly sterilized. Double sterile packing ensures sterility maintenance. Due to a high technical level of production and the strictest control of sterility, **Naxis Implants** meets the requirements of the highest quality standards, confirmed by appropriate certificates.



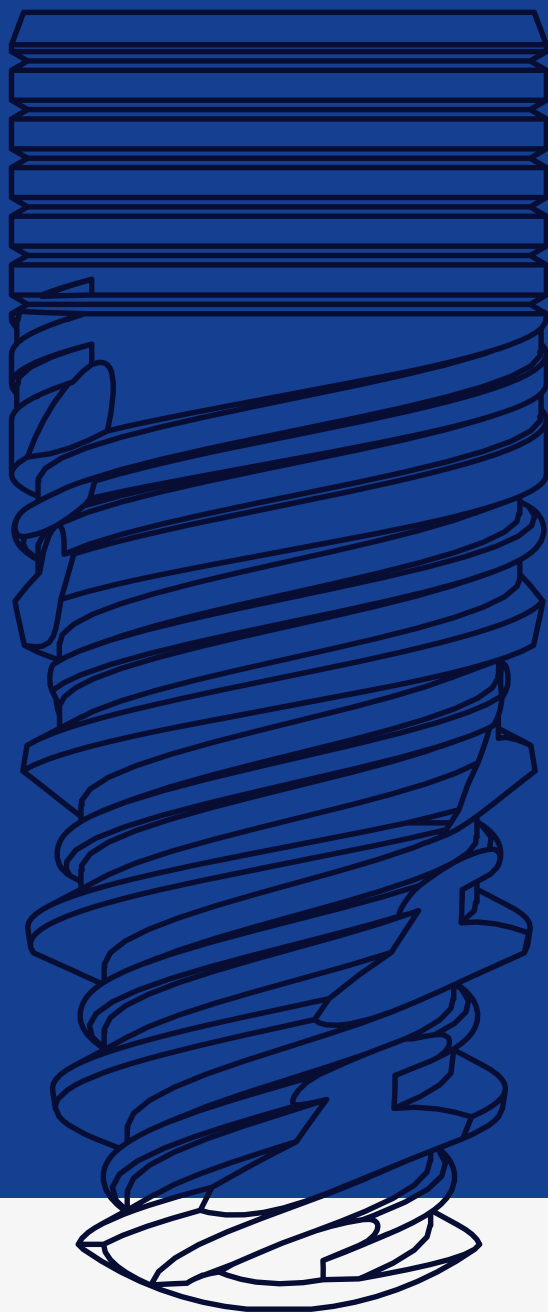
The Micro Porous Surface (MPS)



The Micro Porous Surface (MPS) represents the latest generation of dental implant surface treatment technology. This surface is active and hydrophilic; it has distinct multi-layered microporous structure. The thickness of oxide layer of the implant surface reaches 10-12 microns. The entire thickness of the oxide layer is imbued with micropores that combine with each other and create a multi-layered surface. This way, the bone tissue grows deeper both in and between micro pores. Thereby, implant surface area is significantly increased and, thus, the contact between bone tissue and implant surface is strengthened. Titanium oxide film is enriched with calcium hydroxyapatite, and the implant surface is contaminant-free. It has prominent hydrophilic characteristics (absorption).

Researches show that The Micro Porous Surface (MPS) stimulates active bone growth over the implant surface that results in mechanical stability. This surface property allows performing orthopedic rehabilitation at an earlier stage and significantly reduces the risk when the implant is installed under the one-stage procedure.

NX30



naxis[®]
implants



Implant

with conical connection

NX30 Implant With Conical Connection

NX30 IMPLANTS

One type of conical platform with hexagon



PLATFORM SWITCHING
Switching of the platform
Narrow connection of the implant
prevents compression in cortical layer

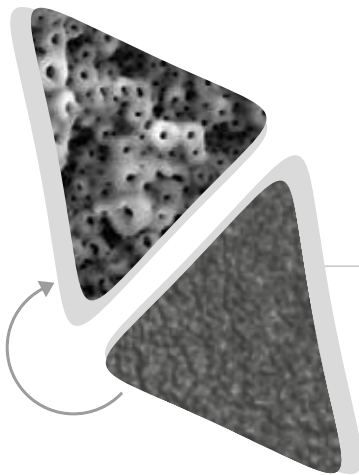
Closure Cap
(Set Includes)



MICRO THREAD
Micro threats for better contact with
bone and helps faster regeneration

INTERMEDIATE THREAD
Bone thread on the
corticospongoid level

THE MICRO POROUS SURFACE (MPS)
Unique active and hydrophilic of
surface a new generation



IMPLANT BODY

Marked tapered shape
of the implant
The shape of an implant
completely compatible
with the drill
High initial stability



ACTIVE THREAD

Multiple levels of height on threads
which allows enlarging the surface
of the implant
Allows achieving reliable initial
stability in soft bone

ANTIROTATIONAL SULCUS

Prevents release of the implant

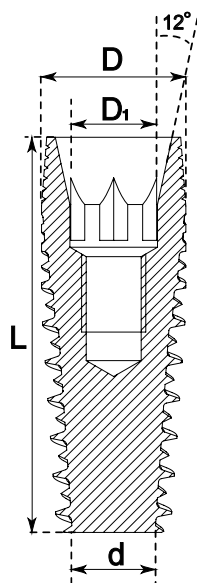
APICAL PART

Curving in apical part prevents
the damage of Schneider's membrane



BONSATEB
بُن سا طب پارسینا

NX30 implant has a platform with an inner cone and a hexagon for positioning. This type of platform allows creating a conical connection with suprastructures. This connection is more stable and airtight.

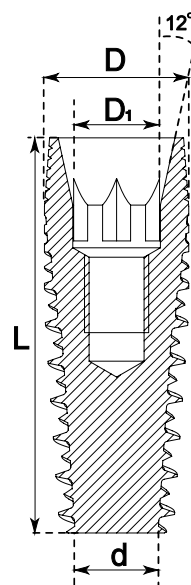


Code REF	NX30325080	NX30325100	NX30325115	NX30325130
D,mm	3.25	3.25	3.25	3.25
D1,mm	2.1	2.1	2.1	2.1
d,mm	1.5	1.5	1.5	1.5
L,mm	8	10	11.5	13

Code REF	NX30375080	NX30375100	NX30375115	NX30375130
D,mm	3.75	3.75	3.75	3.75
D1,mm	2.1	2.1	2.1	2.1
d,mm	2.0	2.0	2.0	2.0
L,mm	8	10	11.5	13

Code REF	BAT301	NX30420080	NX30420100	NX30420115	NX30420130
D,mm	4.2	4.2	4.2	4.2	4.2
D1,mm	2.1	2.1	2.1	2.1	2.1
d,mm	2.5	2.5	2.5	2.5	2.5
L,mm	6	8	10	11.5	13






Code REF	NX30500060	NX30500080	NX30500100	NX30500115
D,mm	5.0	5.0	5.0	5.0
D1,mm	2.1	2.1	2.1	2.1
d,mm	3.0	3.0	3.0	3.0
L,mm	6	8	10	11.5



Surgical Guide



Final drills for

					Ø 3.25 mm	Ø 3.75 mm
						
BONE TYPE		1.5 mm	2.0 mm	2.8 mm	3.0 mm	3.45 mm
Type 1-D1		800-1200	800-1000	600-800	500-700	500-700
Type 2-D2		800-1200	800-1000	600-800	600-800	600-800
Type 3-D3		800-1000	700-900	500-600	500-600	500-600
Type 4-D4		800-1000	600-800	400-500	400-500	400-500

6 mm 8 mm 10 mm 11.5 mm 13 mm 6 mm 8 mm 10 mm

STOPPERS





✱ Cortical bone drill for bone type I and II

implant sizes.

Ø 4.2 mm	Ø 5.0 mm
3.90 mm	4.70 mm
400-600	400-600
500-700	500-700
500-600	500-600
400-500	400-500
11.5 mm 13 mm	

FOR Ø 3.25 IMPLANTS

Bone type I and II no need the use 3,0 final drill instead use 3.2 countersink for
In bone type 3 and 4 case, use 3.0 finishing drill and 3.2 countersink.



Diamond like coated drills in Naxis Implants system are developed with the aim to form a bone cavity for implants NX30 because the drill shape recreates perfectly the shape of the implant without thread.



BONSATEB
بُن سا طب پارسینا

PROSTHESIS PARTS

Abutment



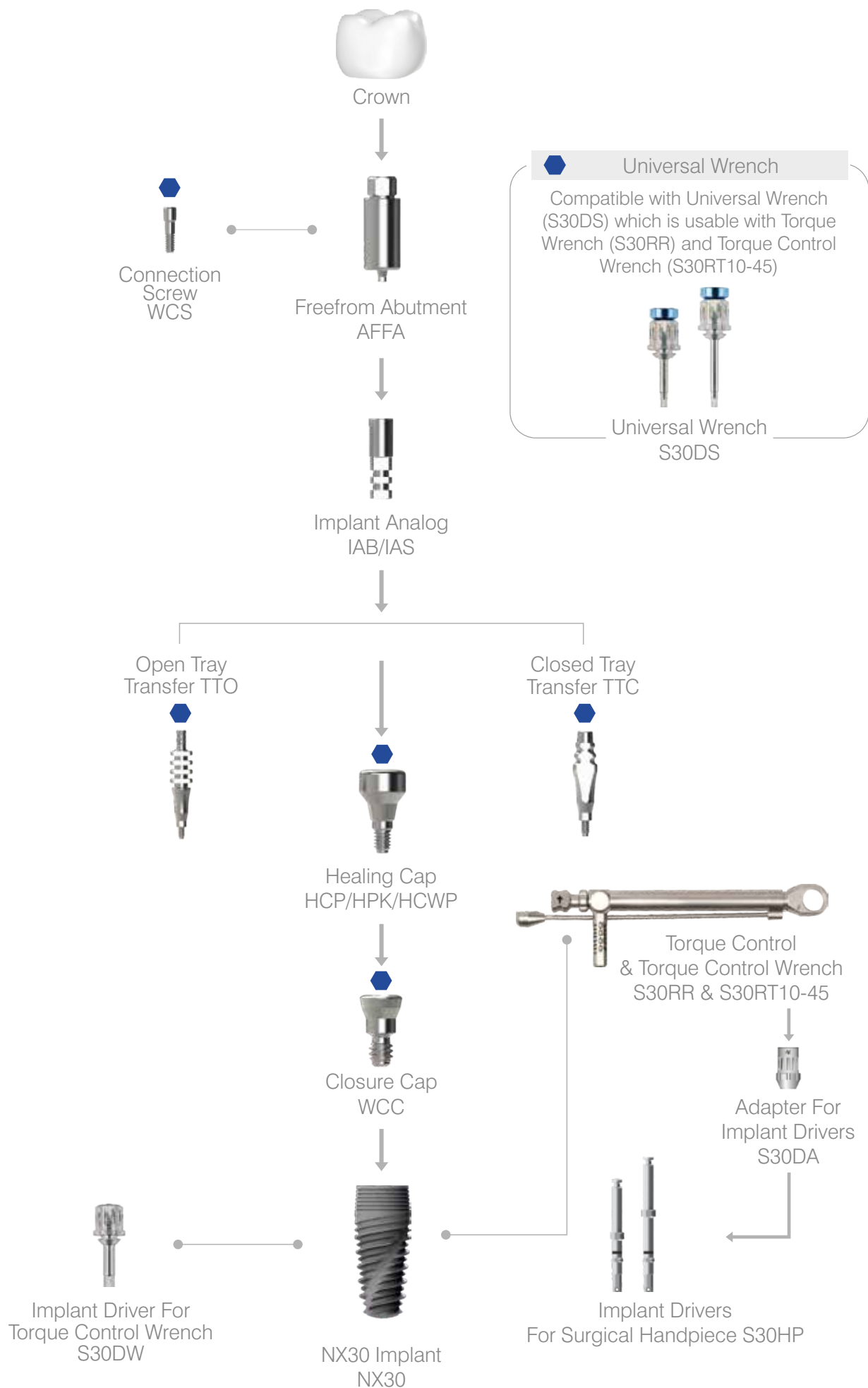
naxis[®]
implants



Freeform

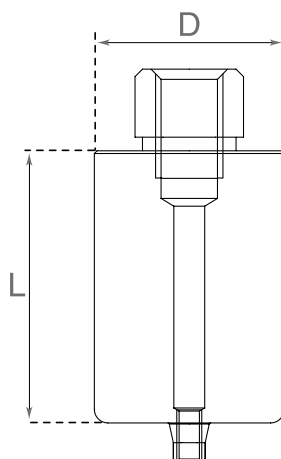
Abutment

Freeform
Abutment



FREEFORM ABUTMENT

Recommended tightening torque: 20Ncm



CONICAL PLATFORM 2.1 mm

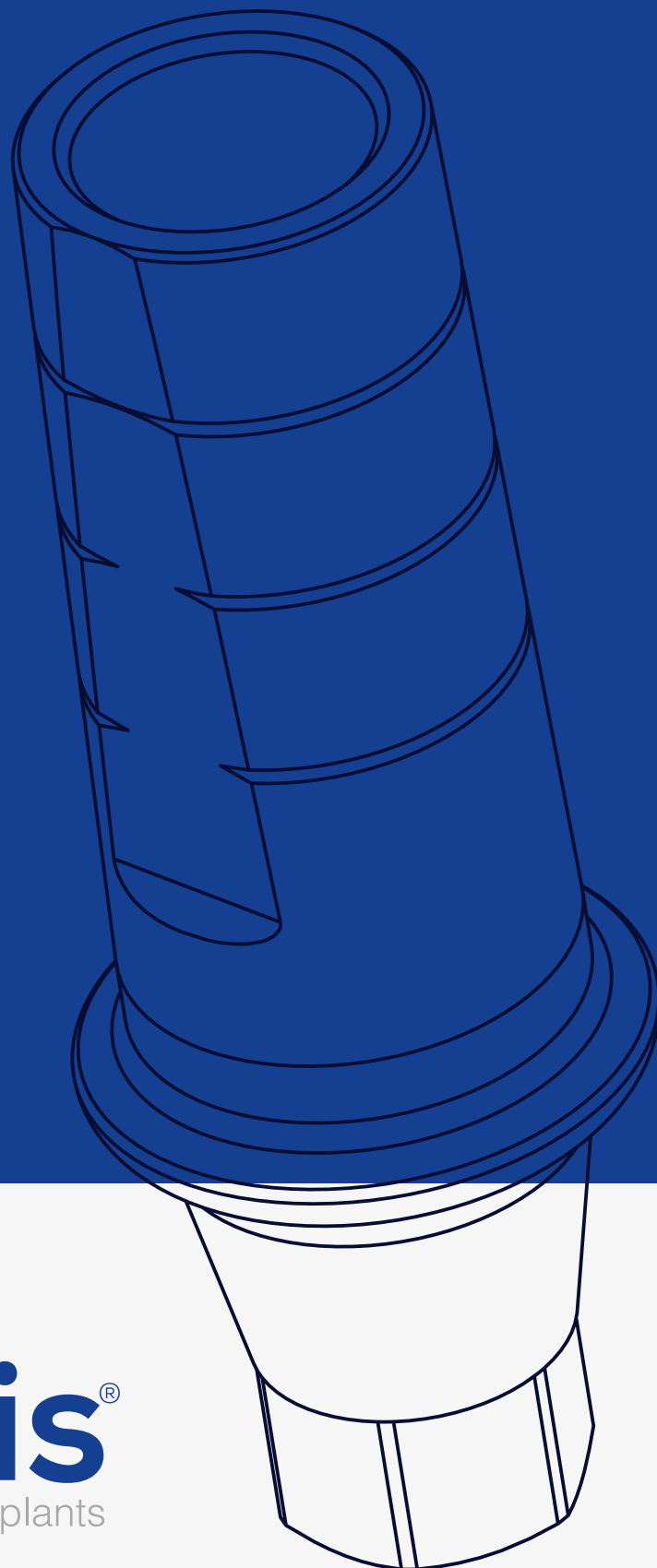


Code	AFFA30	Includes
L,mm	20	 Screw for the abutment
D,mm	10	



PROSTHESIS PARTS

Abutment



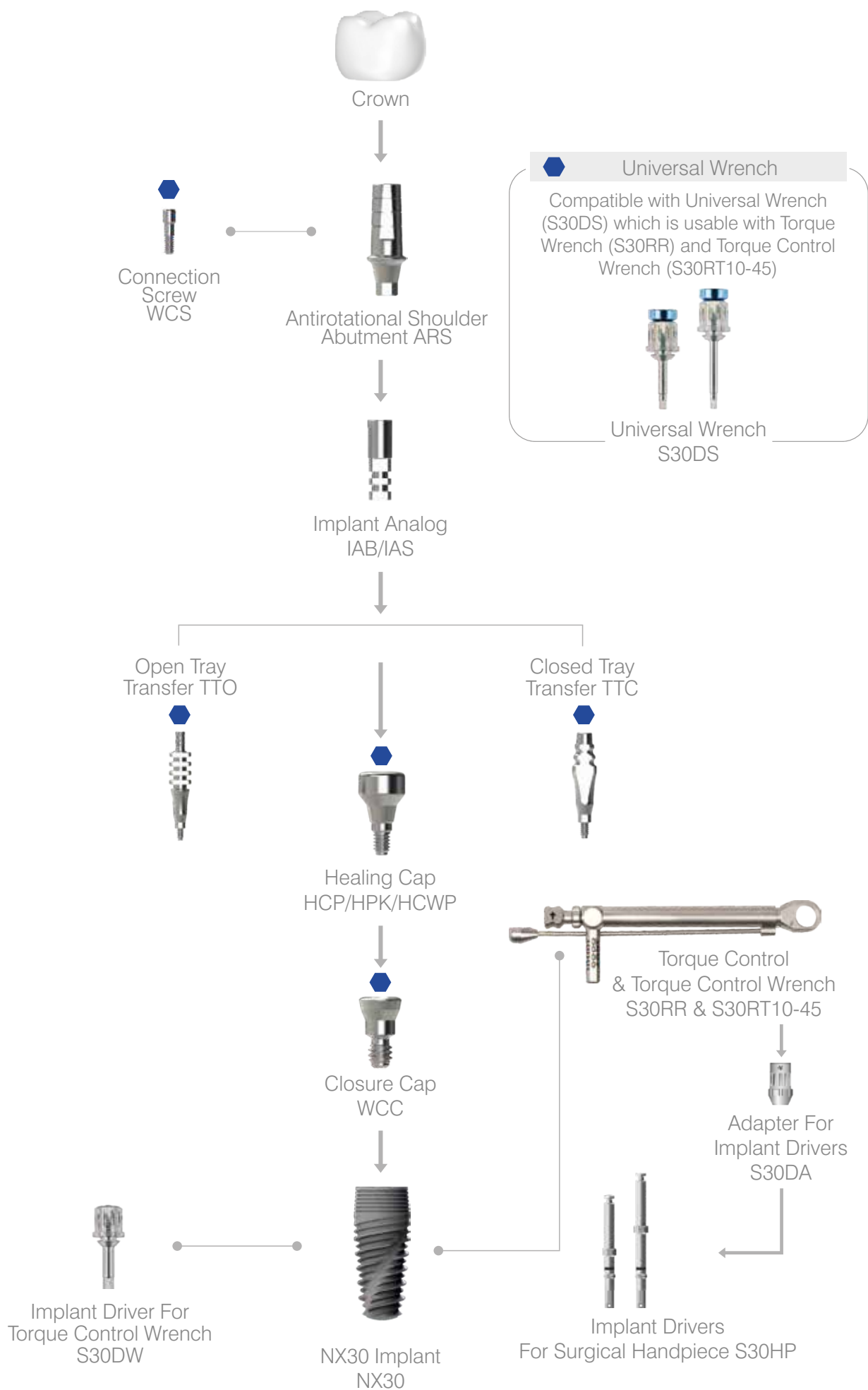
naxis[®]
implants



Antirrotational

Shoulder Abutment

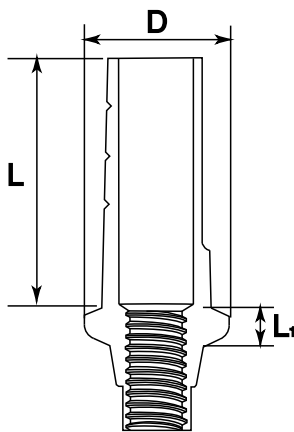
Antirrotational
Shoulder Abutment



ANTIROTATIONAL SHOULDER ABUTMENT

Recommended tightening torque: 20Ncm

CONICAL PLATFORM 2.1 mm



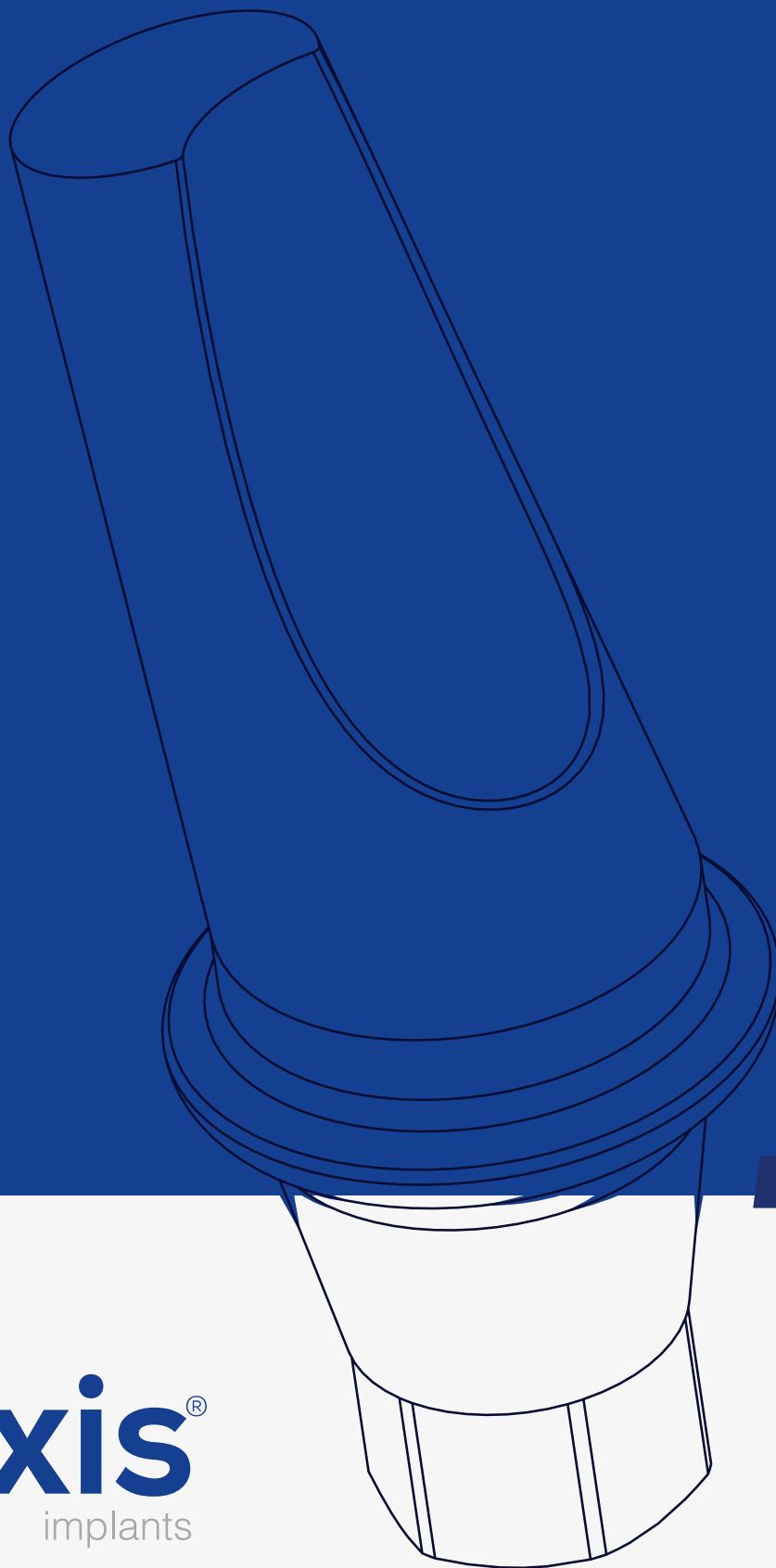
Code	ARS3010	ARS3020	ARS3030	BAT302	BAT303	Includes
L,mm	7	7	7	7	7	 Screw for the abutment
L1,mm	1	2	3	4	5	
D,mm	4.2	4.2	4.2	4.2	4.2	

Antirotational shoulder abutment straight conical.
Available in three shoulder sizes: 1,2,3,4,5 mm.



PROSTHESIS PARTS

Abutment



naxis[®]
implants



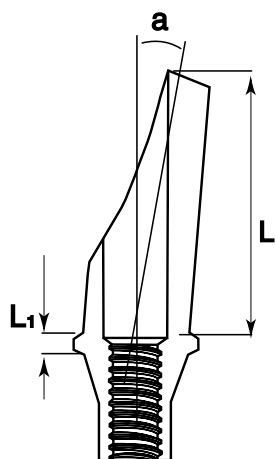
Anatomical Angular
Abutment Shoulder 15° & 25°


ANATOMICAL ANGULAR SHOULDER ABUTMENT 15°

Recommended tightening torque: 15Ncm

CONICAL PLATFORM 2.1 mm

15°



Code	AAN30151	AAN30152	AAN30153	AAR3015	Includes
L,mm	7	7	7	7	 Screw for the abutment
L1,mm	1	2	3	4	
a°	15	15	15	15	

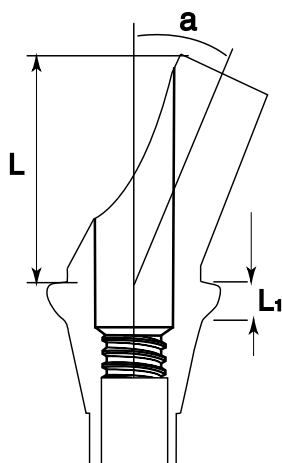
Angular anatomical titanium conical abutment 15° with shoulder 1,2,3,4 mm. It is used for aesthetic tasks solving in vestibular area, and it replicates the shape of gingival line.

ANATOMICAL ANGULAR SHOULDER ABUTMENT 25°

Recommended tightening torque: 15Ncm

CONICAL PLATFORM 2.1 mm

25°

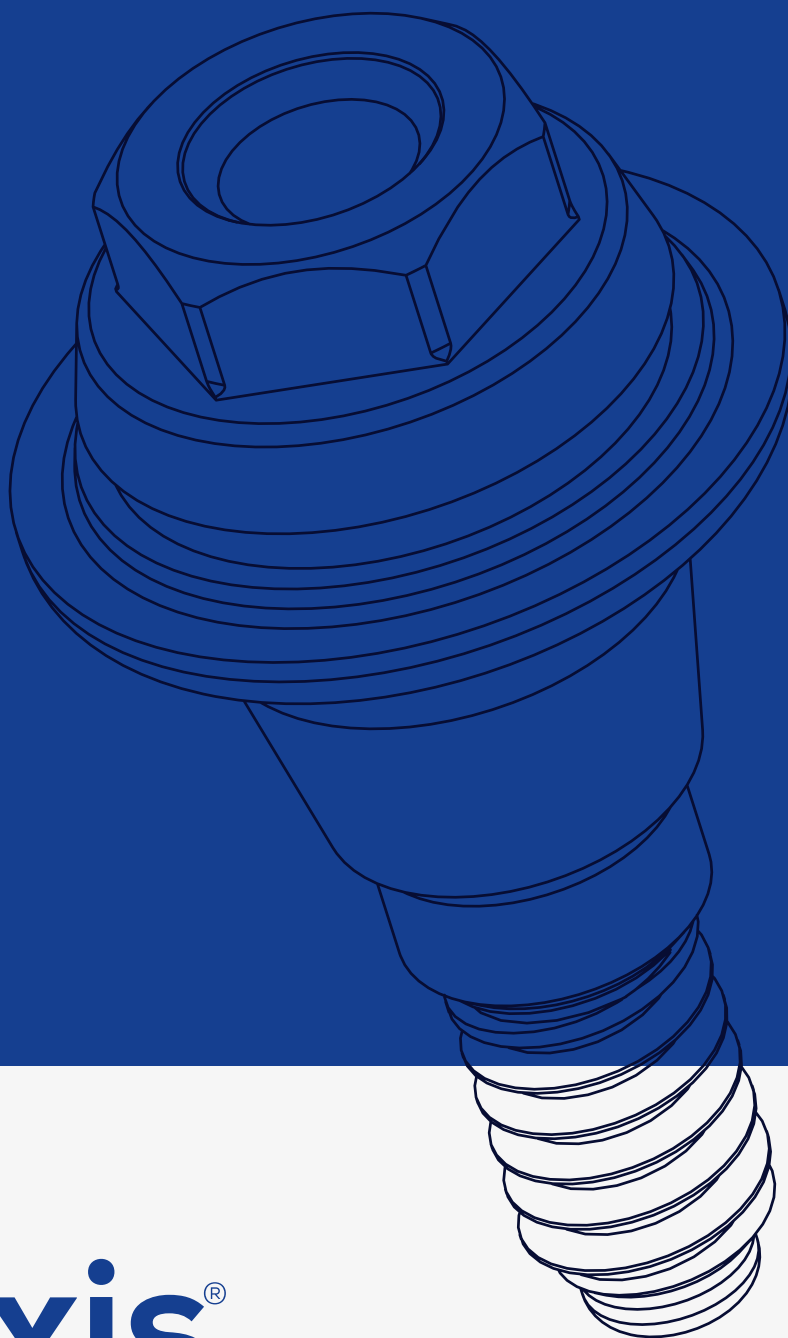


Code	AAS30252	ARAN3025	Includes
L,mm	7	7	 Screw for the abutment
L1,mm	2	3	
a°	25	25	



PROSTHESIS PARTS

Multi-Unit



naxis[®]
implants

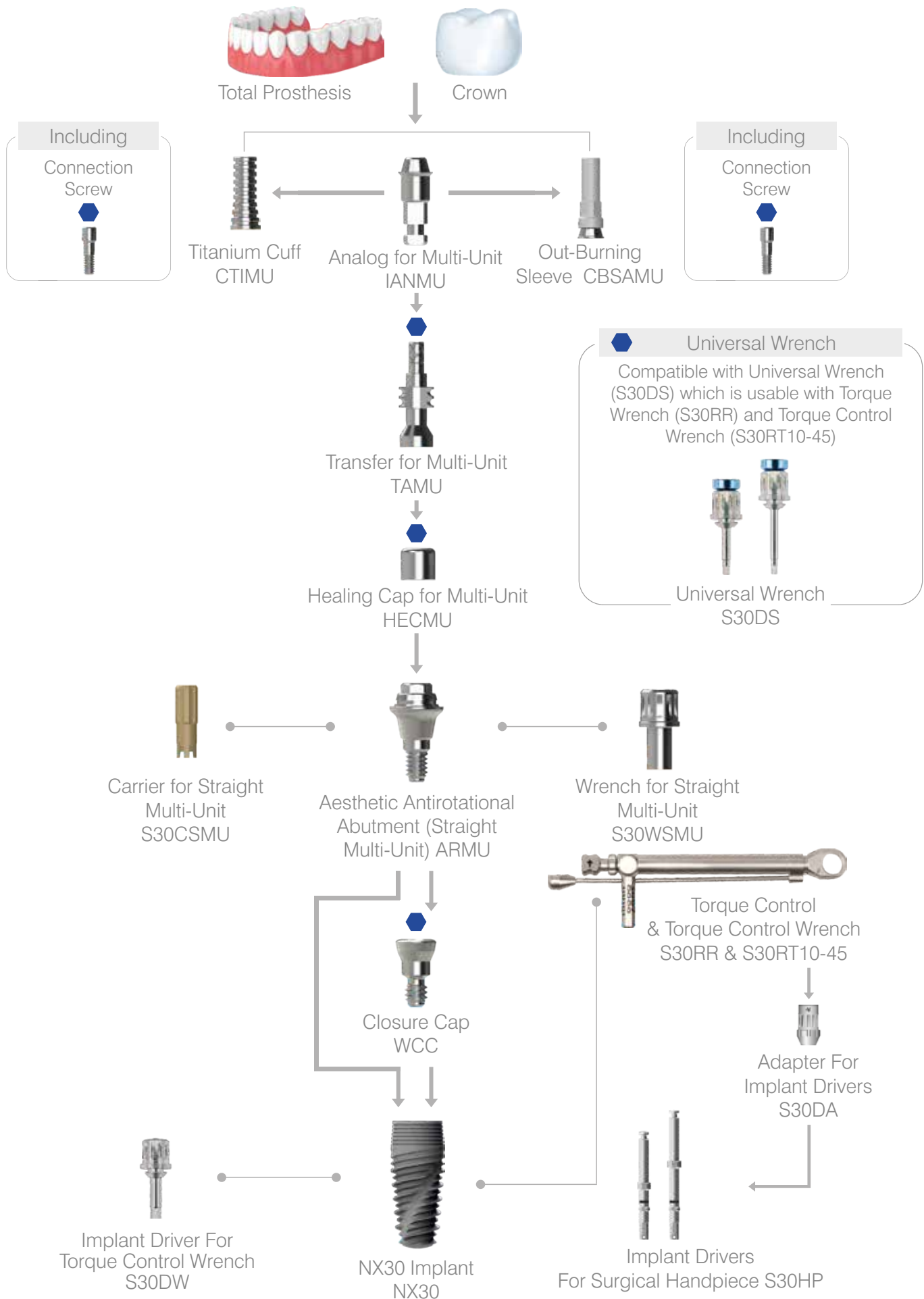


*Aesthetic
Antirotational
Abutment*

Straight Multi-Unit



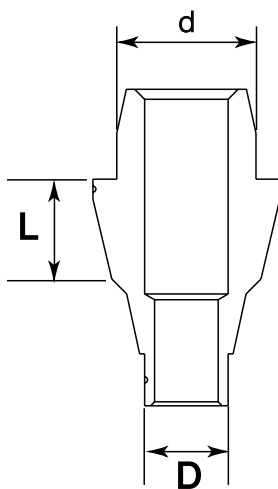
Aesthetic Antirotational Abutment
Straight Multi-Unit



AESTHETIC ANTIROTATIONAL ABUTMENT (STRAIGHT MULTI-UNIT)

Recommended tightening torque: 20Ncm

CONICAL PLATFORM 2.1 mm



Code	ARMU301	ARMU302	ARMU303
L,mm	1	2.	3
D,mm	2.35	2.35	2.35
d,mm	4.0	4.0	4.0

Aesthetic antirotational abutment (straight multi-unit) with a plastic cuff is used in order to restore a single structure or a bridge with a screw retention.

Screw the Cuff in with a maximum force of 15 newton.


PROSTHESIS PARTS

Multi-Unit



naxis[®]
implants

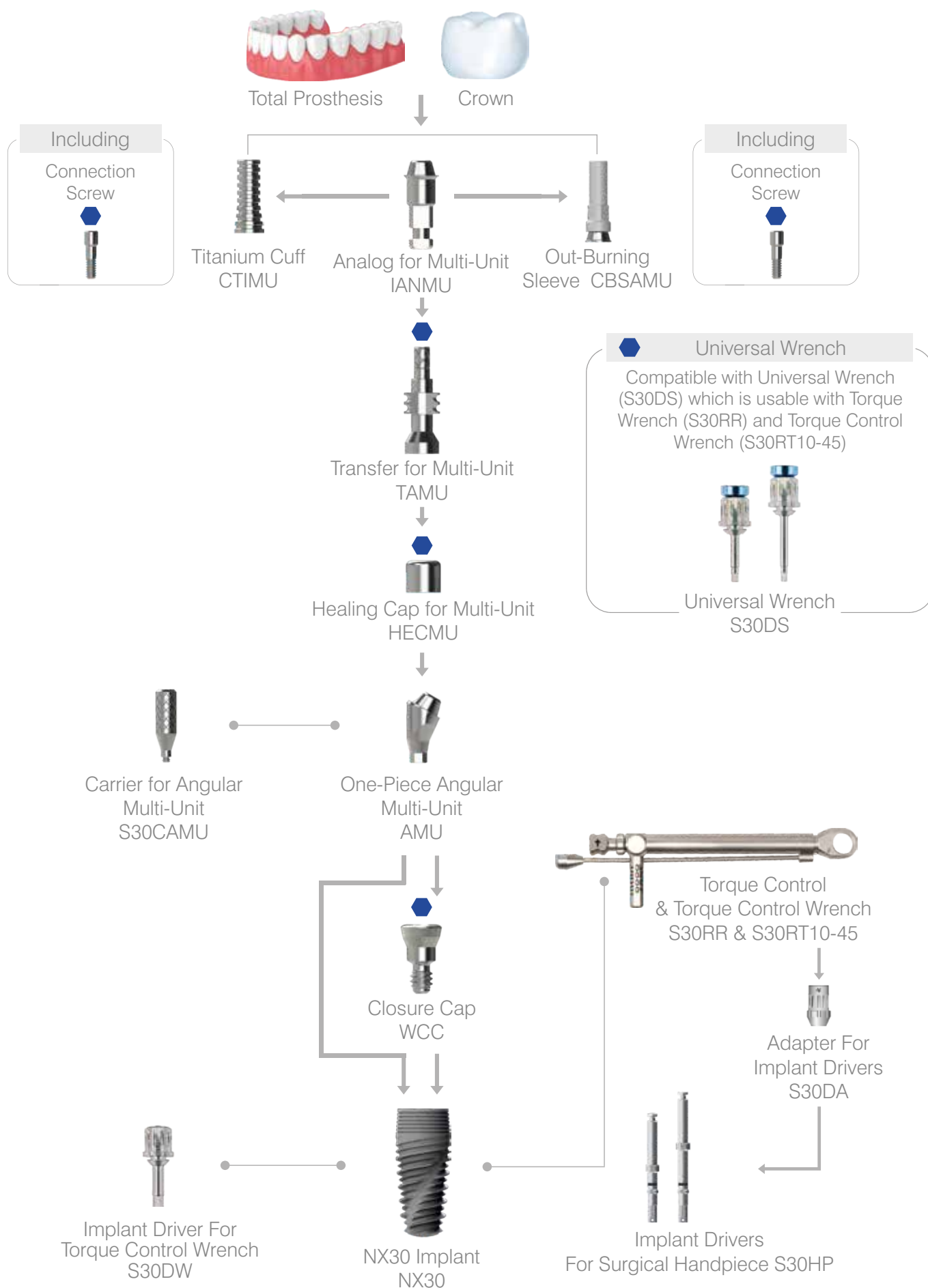
One Piece Angular



Multi-Unit

17°&30°

One Piece Angular
Multi-Unit 17°&30°

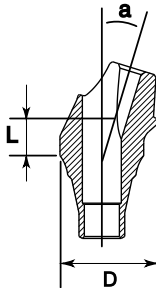


ONE-PIECE ANGULAR MULTI-UNIT 17°&30°

Recommended tightening torque: 15Ncm

CONICAL PLATFORM 2.1 mm

17°

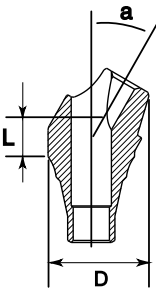


Code	AMU30171	AMU30172	AMU30173
L,mm	1	2	3
D,mm	4.7	4.7	4.7
a°	17	17	17

17° with shoulder 1,2,3 mm. It is used for aesthetic tasks solving in vestibular area, and it replicates the shape of gingival line.

CONICAL PLATFORM 2.1 mm

30°

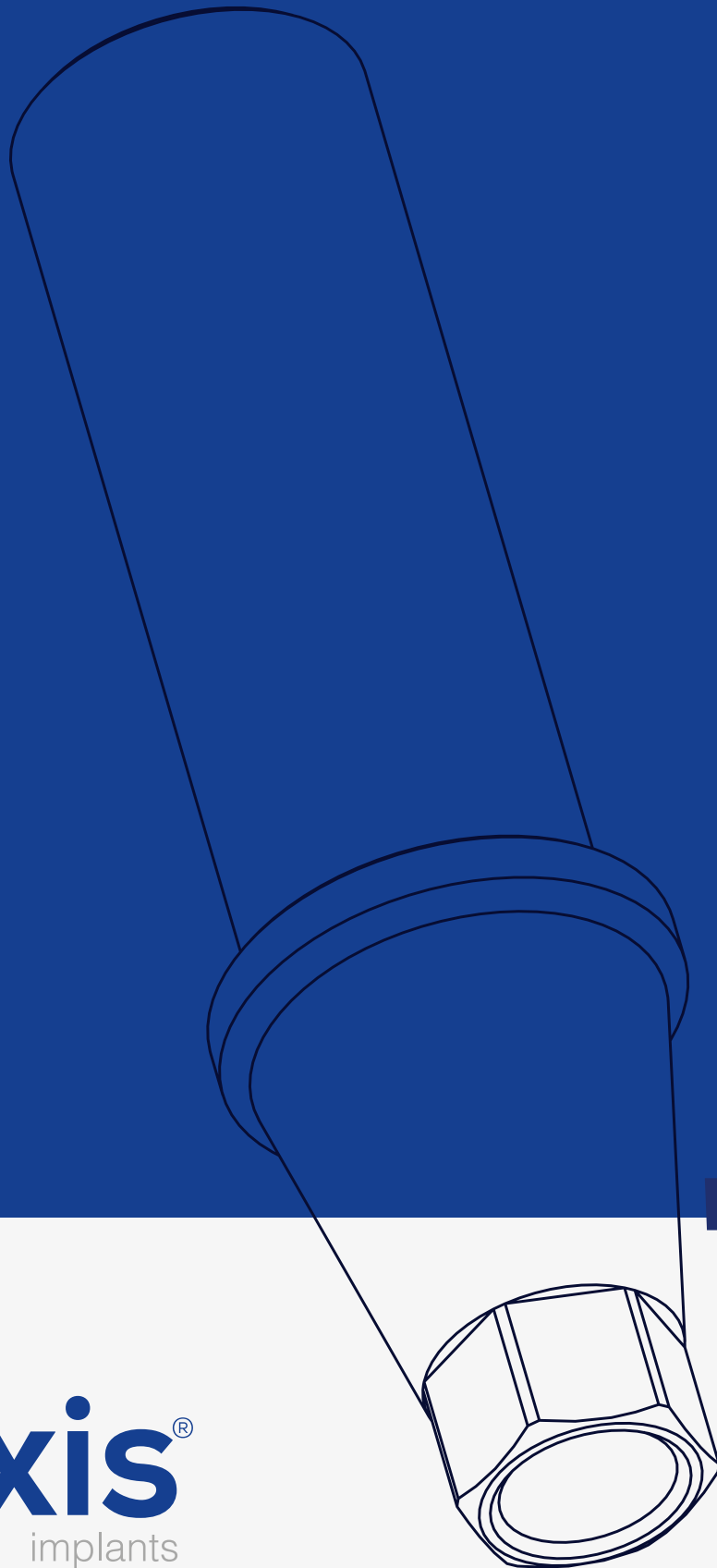


Code	AMU30301	AMU30302	AMU30303
L,mm	1	2	3
D,mm	4.7	4.7	4.7
a°	30	30	30

Multi-unit system is used for a prosthesis with screw retention. One-piece angular multi-unit enables rehabilitation on non-parallel implants by correcting the angle. Angular multi-unit is available in options 17° and 30°.

PROSTHESIS PARTS

Burnout Abutment



naxis[®]
implants



Ti-Base

Plastic Burnout

Plastic Burnout &
Titanium Base

Plastic Burnout Abutment



Crown



Connection
Screw
WCS



Plastic Burnout
Titanium Base APTB



Plastic Burnout
APBO



Implant Analog
IAB/IAS



Open Tray
Transfer TTO



Healing Cap
HCP/HPK/HCWP



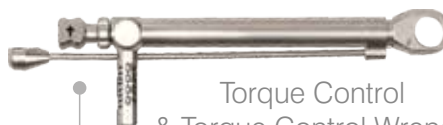
Closure Cap
WCC



NX30 Implant
NX30



Implant Driver For
Torque Control Wrench
S30DW



Torque Control
& Torque Control Wrench
S30RR & S30RT10-45



Adapter For
Implant Drivers
S30DA



Implant Drivers
For Surgical Handpiece S30HP



Universal Wrench

Compatible with Universal Wrench (S30DS) which is usable with Torque Wrench (S30RR) and Torque Control Wrench (S30RT10-45)

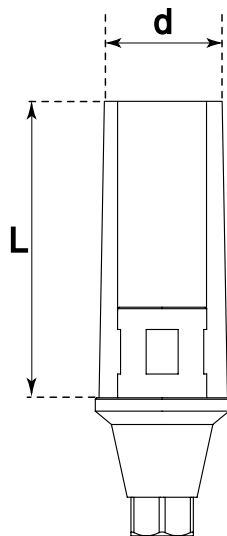


Universal Wrench
S30DS

PLASTIC BURNOUT ABUTMENT ON TITANIUM BASE

Recommended tightening torque: 20Ncm

CONICAL PLATFORM 2.1 mm



Code	APTB30	Includes
L,mm	9	 Screw for the abutment
d,mm	4,5	

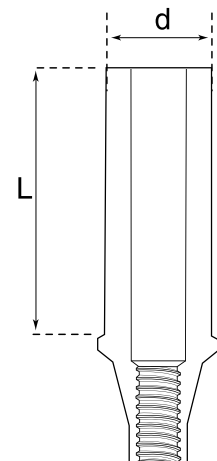
PLASTIC BURNOUT ABUTMENT

Recommended tightening torque: 20Ncm

CONICAL PLATFORM 2.1 mm

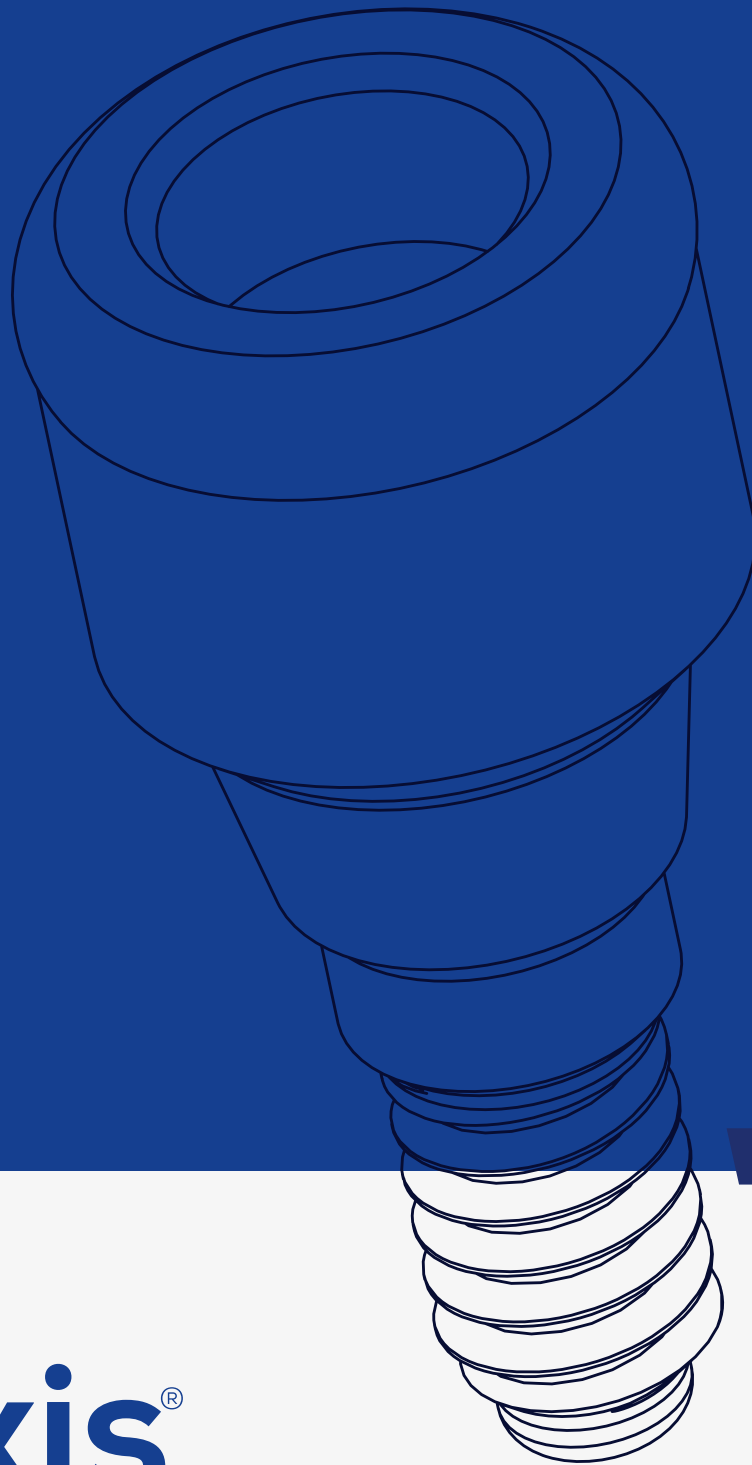


Code	APBO30	Includes
L,mm	9	 Screw for the abutment
d,mm	4.2	



PROSTHESIS PARTS

Locator

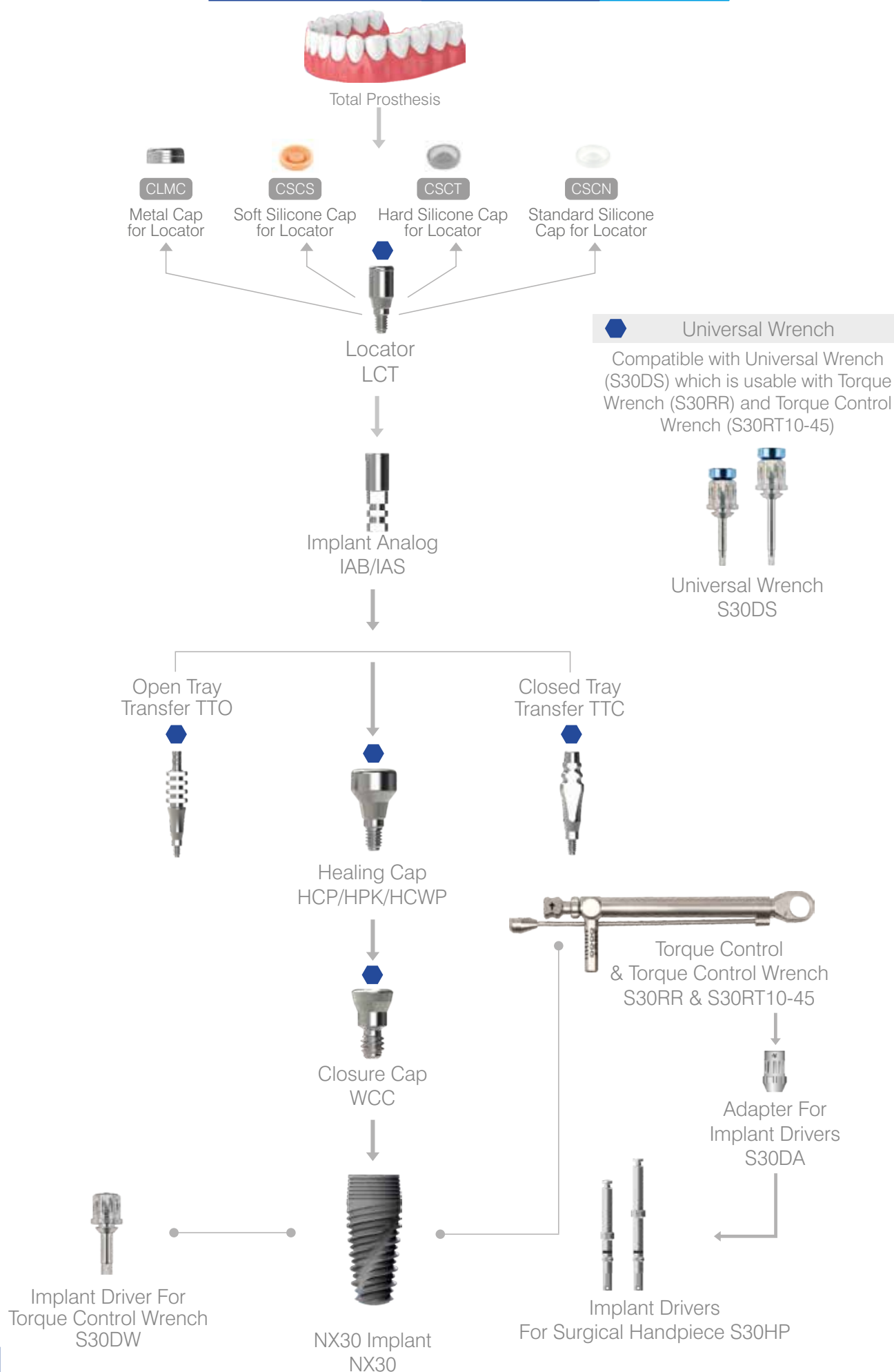


naxis[®]
implants



Locator

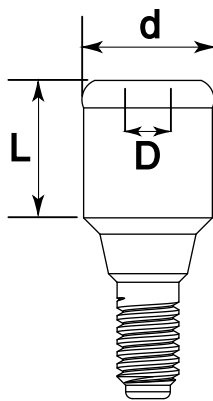
Locator












LOCATORS

Recommended tightening torque: 20Ncm

CONICAL PLATFORM 2.1 mm



						
Code	LCT302	LCT303	LCT304	LCT305	LCT306	Includes
L,mm	2	3	4	5	6	 
D,mm	1.25	1.25	1.25	1.25	1.25	 
d,mm	3.9	3.9	3.9	3.9	3.9	All Caps




ACCESSORIES

Transfer & Analog



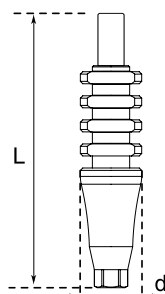
naxis[®]
implants

Transfer & Analog

Three precision metal connectors are shown against a dark blue background. One connector is positioned to the left of the word 'Transfer', another is to the right of 'Transfer', and a third, larger one is positioned below the word 'Analog'. The connectors have various shapes, including threaded bases and smooth cylindrical sections.

Transfer & Analog

OPEN TRAY TRANSFER

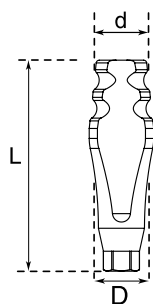


CONICAL PLATFORM 2.1 mm



Code	TTO3015	Includes
L,mm	17.75	 Screw for Open Tray Transfer
d,mm	4.0	

CLOSED TRAY TRANSFER

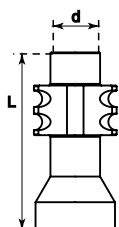


CONICAL PLATFORM 2.1 mm



Code	TTC309	Includes
L,mm	13.7	 Screw for Closed Tray Transfer
D,mm	4.0	
d,mm	3.0	

TRANSFER FOR MULTI-UNIT



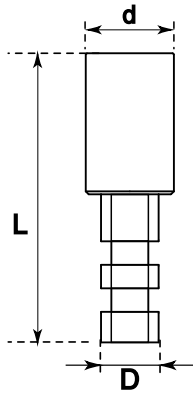
MULTI-UNIT PLATFORM



Code	TAMU	Includes
L,mm	10	 Screw for Transfer for Multi-Unit
d,mm	4.5	



IMPLANT ANALOG

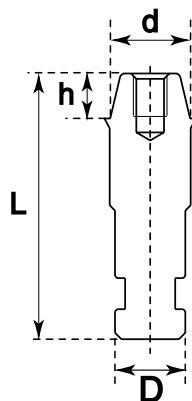


CONICAL PLATFORM 2.1 mm



Code	IAS30	Includes
L,mm	12.3	 Screw for Open Tray Transfer
D,mm	2.5	
d,mm	3.7	

ANALOG OF MULTI-UNIT



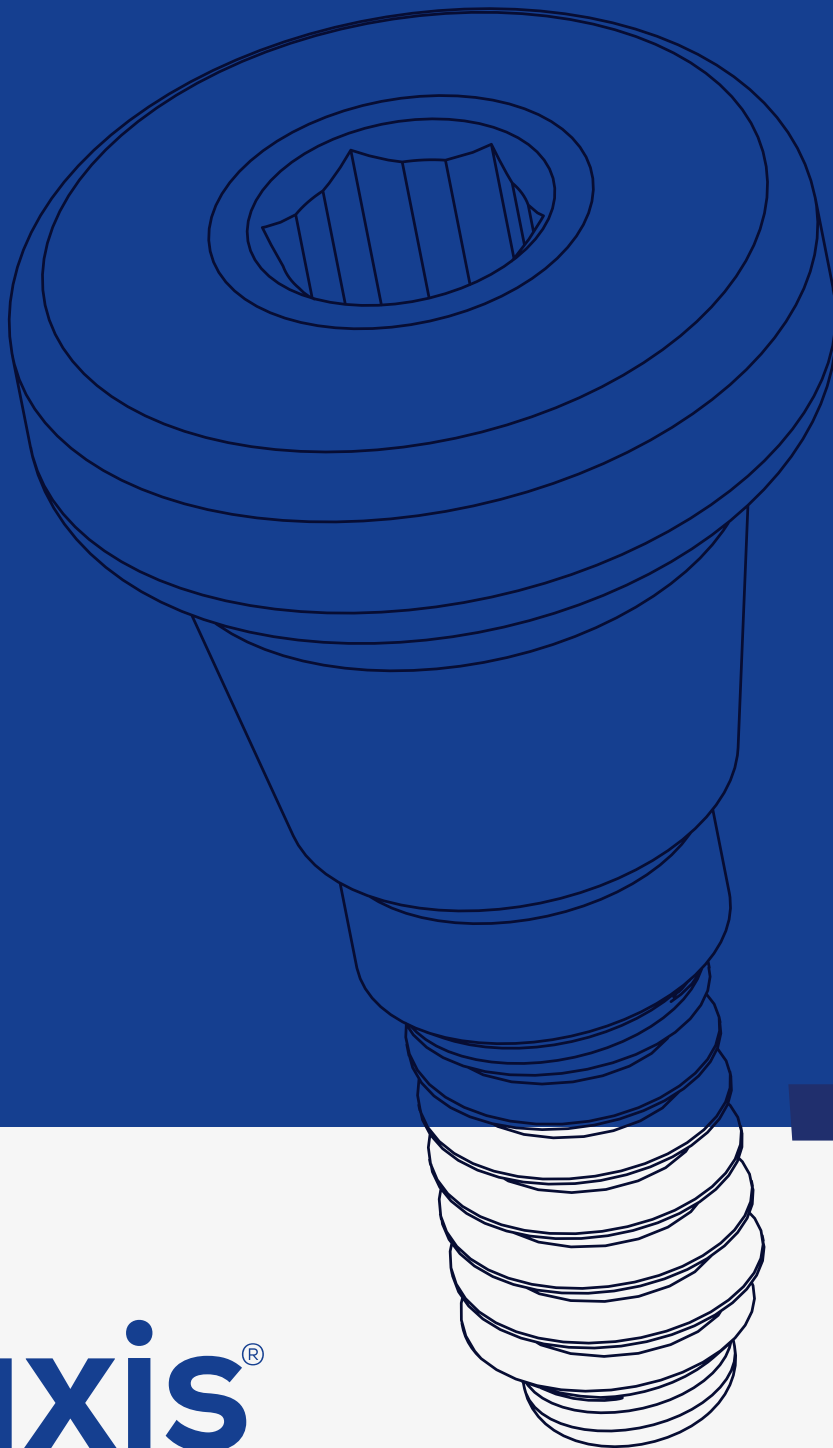
MULTI-UNIT PLATFORM



Code	IANMU
L,mm	12.4
D,mm	3.3
d,mm	3.75
h,mm	2.0

ACCESSORIES

Healing Cap



naxis[®]
implants

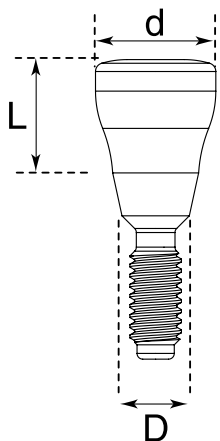
Healing



Cap

Healing Cap

HEALING CAP

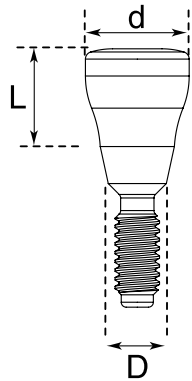


CONICAL PLATFORM 2.1 mm



Code	HCP302	HCP303	HCP304	HCP305	HCP307
L,mm	2	3	4	5	7
D,mm	2.35	2.35	2.35	2.35	2.35
d,mm	4.2	4.2	4.2	4.2	4.2

WIDE HEALING CAP

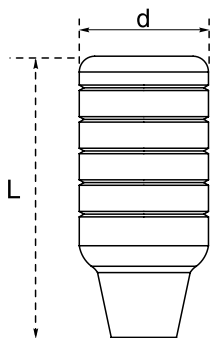


CONICAL PLATFORM 2.1 mm



Code	HCWP303	HCWP304	HCWP305
L,mm	3	4	5
D,mm	2.35	2.35	2.35
d,mm	5.0	5.0	5.0

HEALING CAP PEEK

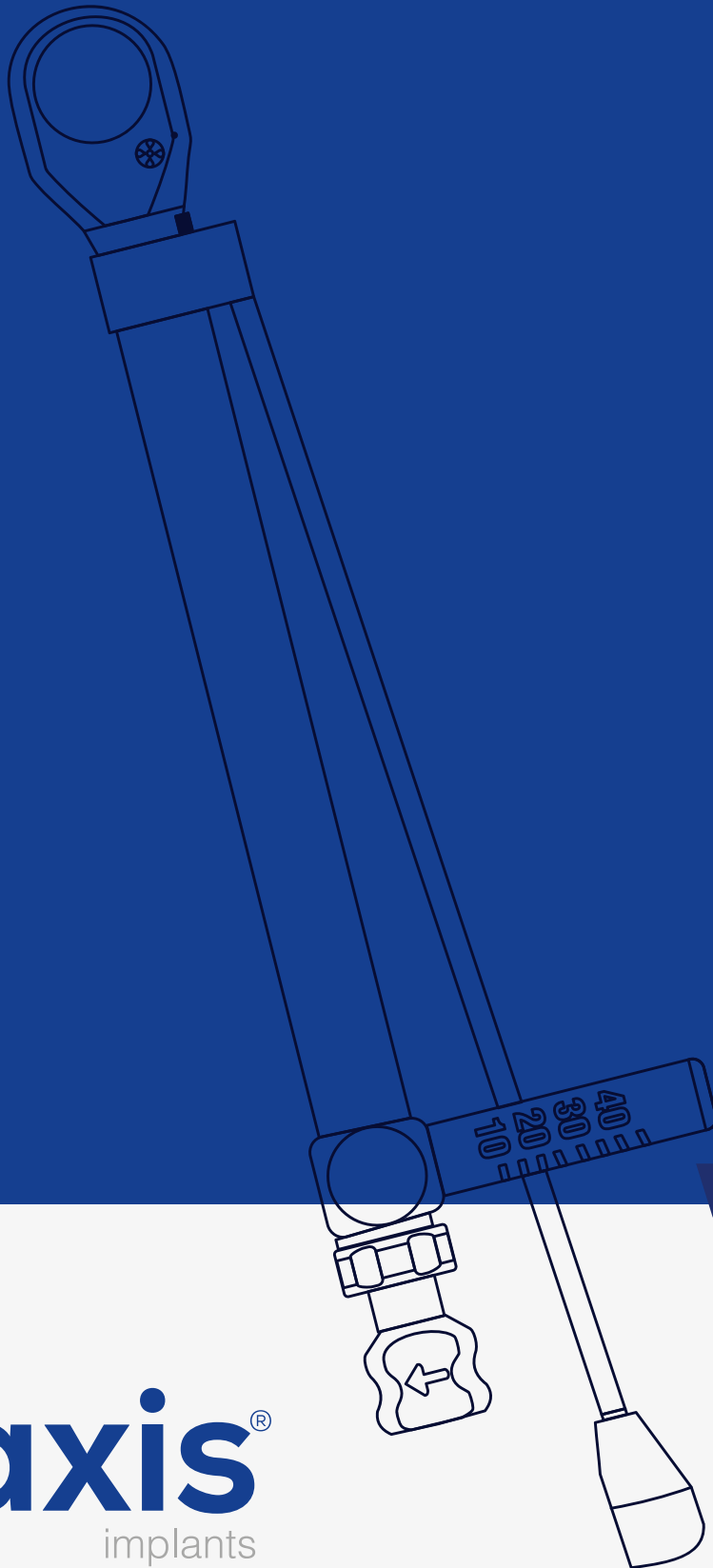


CONICAL PLATFORM 2.1 mm



Code	HPK30	Includes
L,mm	8.95	 Screw for the healing cap
d,mm	4.2	

SURGICAL PART

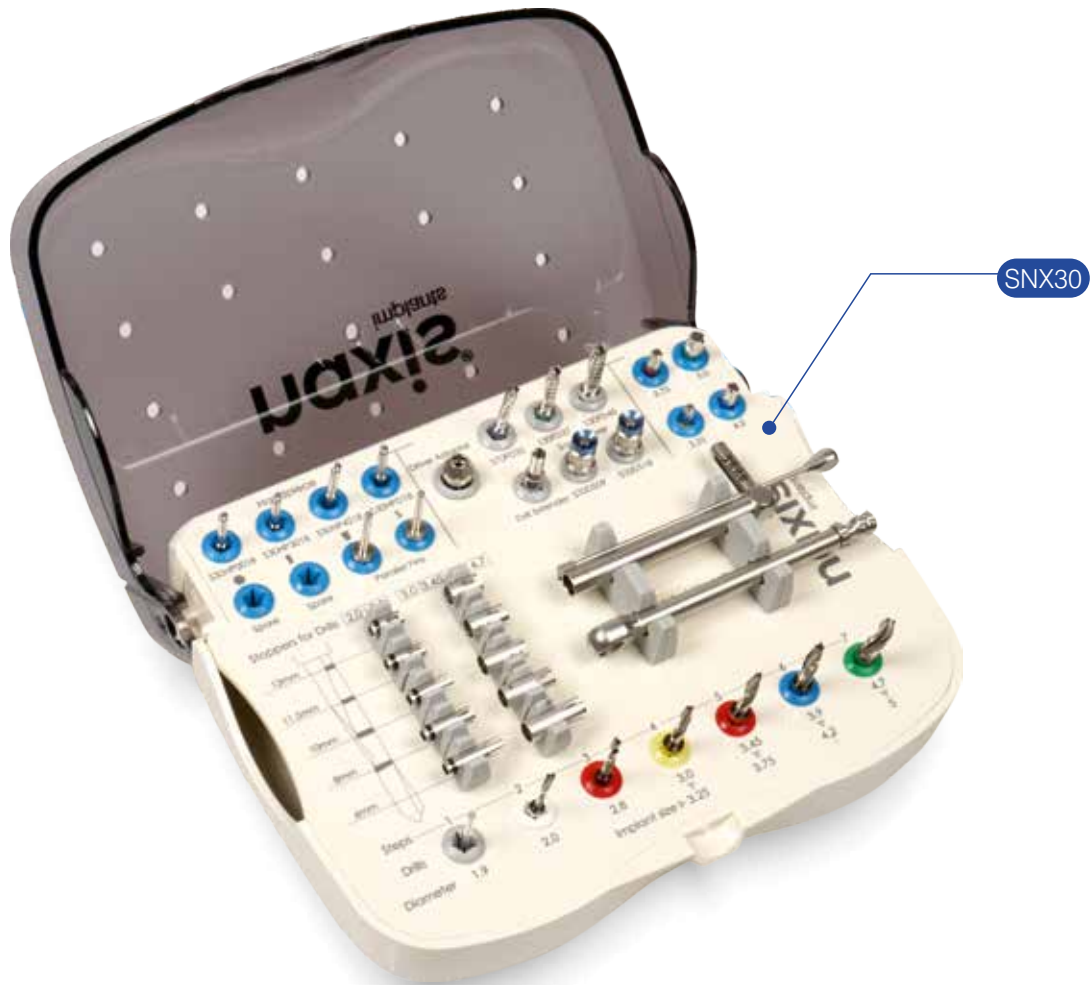


naxis[®]
implants



Instruments & Kits

Instruments & Kits



A SET OF INSTRUMENTS

Heat Resistance Instrument Case

An minimized and improved set by Naxis Implants includes all the necessary instruments for the installation of implants and allows conducting all procedures fast and safely.

The new ergonomic design is made in accordance with a sequence of preparation of bone cavity for the implant.

DRILLS



COUNTERSINKS



STOPS

for Drills 2.0 and 2.8



TORQUE WRENCHES



STOPS

for 3.0, 3.45, 3.9, 4.7 drills



TORQUE CONTROL WRENCHES



DRILL EXTENDER



IMPLANT DRIVERS



ADAPTER FOR IMPLANT DRIVERS



WRENCH FOR ABUTMENT UNIVERSAL SCREW



PARALLEL PIN



IMPLANT DRIVERS

For implants with conical connection

SMALL CONICAL PLATFORM FOR SURGICAL HANDPIECE



S30HP3009



S30HP3018

SMALL CONICAL PLATFORM FOR TORQUE CONTROL WRENCH



S30DW3009

ADAPTER FOR IMPLANT DRIVERS

Adapter for implant drivers for surgical handpiece for:

- torque wrench
- torque control wrench
- implant drivers for handpieces



S30DA

UNIVERSAL WRENCH FOR ABUTMENT SCREW FIXATION

Size of 9 mm and 18 mm

Short and long manual wrench for screws.
It can be used for manual screw fixation, as well as for torque wrench or torque control wrench. It can be used with all screws in the system.



S30DS09



S30DS18

PARALLEL PIN

The parallel pins during the surgery it helps to doctor to understand the depth and angle



S30PP09



S30PP18

DRILL EXTENDER

Drill extender which helps for elongation of implant driver for surgical hand pieces with angle driver



S30DE

WRENCHES

Torque Wrench



S30RR

Torque Control Wrench



S30RT10-45

Torque Wrench & Torque Control Wrench



DRILL

Perfect formation of a bone cavity for installation of conical shape Nx30 conical shape of drill perfectly recreates the shape of conical implant without a thread. Diamond coated allows maintaining the cutting properties of drill for longer time.



COUNTERSINKS

It is used in order to reduce compression in cortical layer, to preserve trophicity, and to prevent bone resorption



THE SET OF STOPS FOR DRILLS

The set of stops for drills with 2.0 and 2.8 mm diameters



The set of stops for drills with 3.0, 3.45, 3.9, and 4.7 mm diameters



Drill stops are used in order to form a guaranteed depth of bone cavity for installation of a selected implant. The stop will stand still at the level of a cortical layer and will prevent an excessive drilling.





Naxis Medical GmbH / Germany



BONSATEB

بُن سا طب پارسینا

Synergy
from the roots.

naxis[®]
implants

CE 1984 EN ISO 13485

Naxis Medical GmbH
Werner-von-Siemens-Straße 2 64319
Pfungstadt Germany
info@naxisimplant.com
www.naxisimplant.com