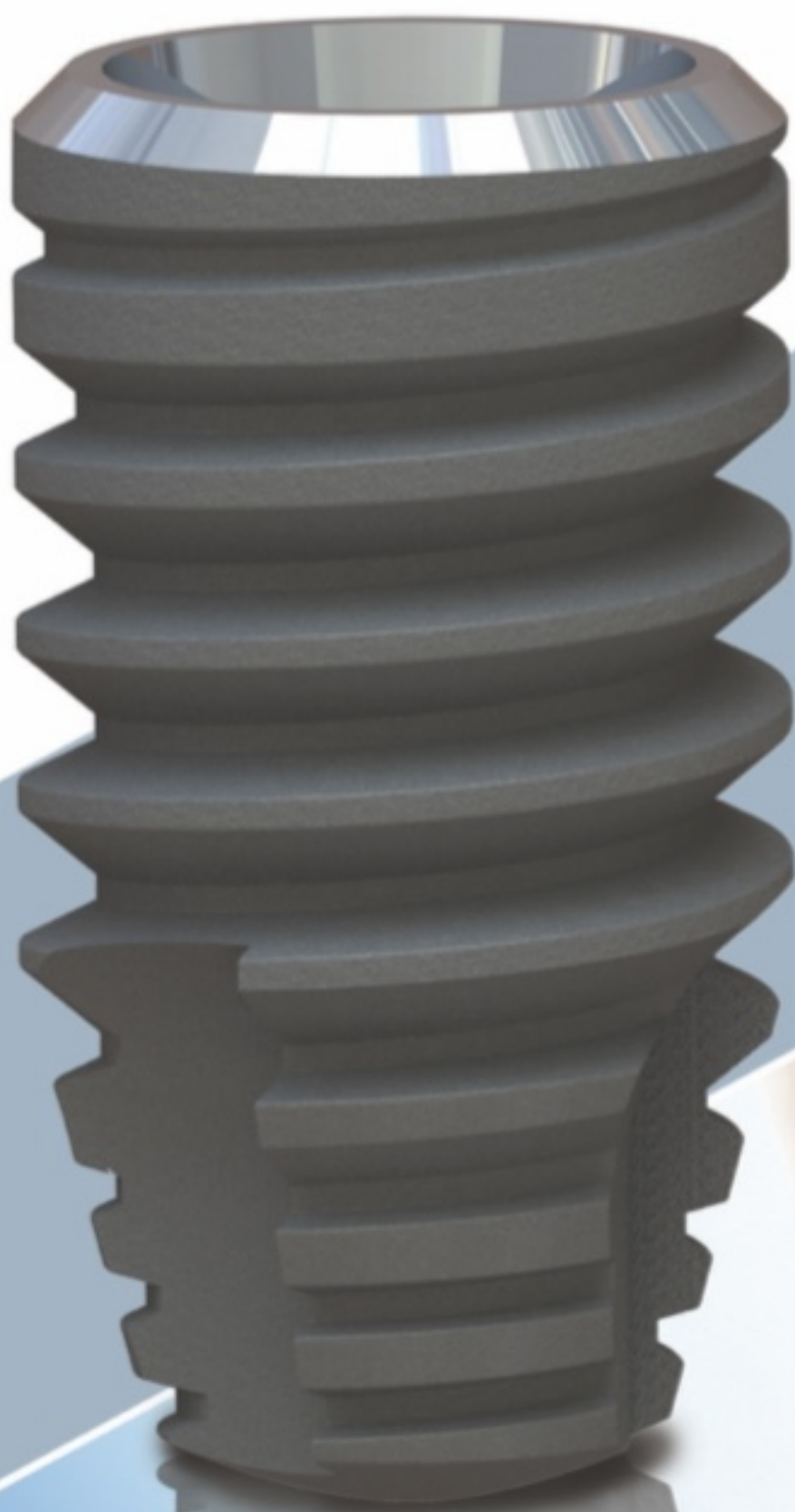




DENTAL IMPLANTS SYSTEM

*...Creating smiles
with a gentle touch...*



@DPIimplantsystem
@Parssamantebco
www.Parssamanteb.com

PARS SAMAN TEB

Exclusive Sales
Representative

F E A T U R E S & B E N E F I T

Fixture

Bone level type



The Fixtures produced by Company In DPI

Model have excellent initial stability and easy placement feature, suitable for treatment in aesthete Zone areas, compatible with jaw and anatomy with minimal bone desorption, having a stable biological connection with easy and safe surgery and can be used in different Type of bones and the material is medical titanium grade 5

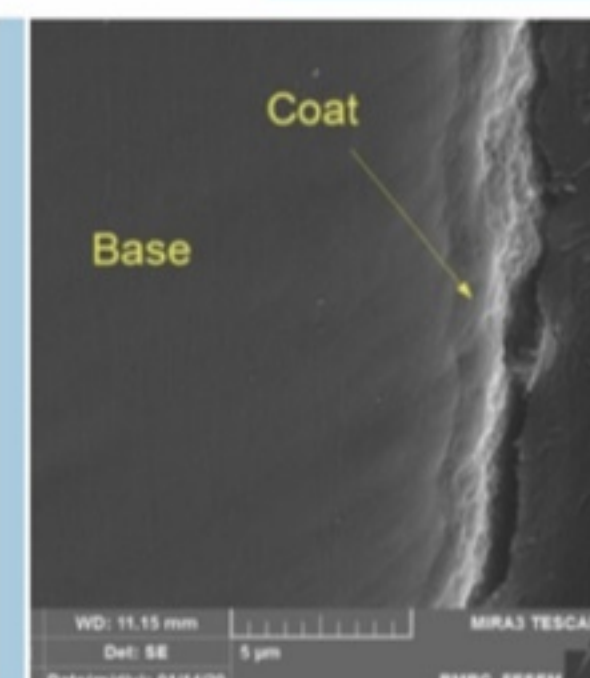
- Various diameter: 3.7, 4, 4.5, 5 mm
- Various length: 8, 10, 12, 14 mm
- Suitable for treatment in beauty areas (Full esthetic)
- Excellent primary stability and easy insertion
- Compatible with maxillofacial anatomy with minimal bone loss
- No micro threads
- Having rough surface in the cervical zone
- Special design of macro threads to have high efficiency



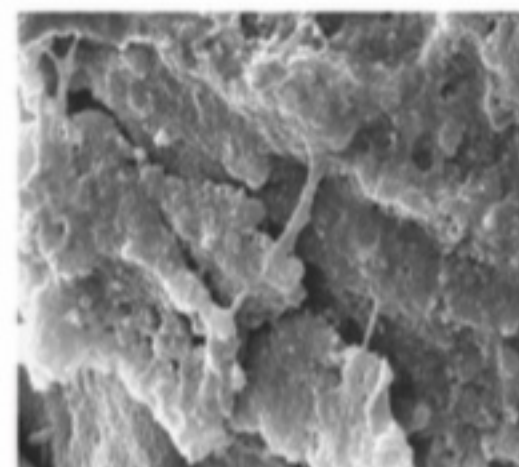
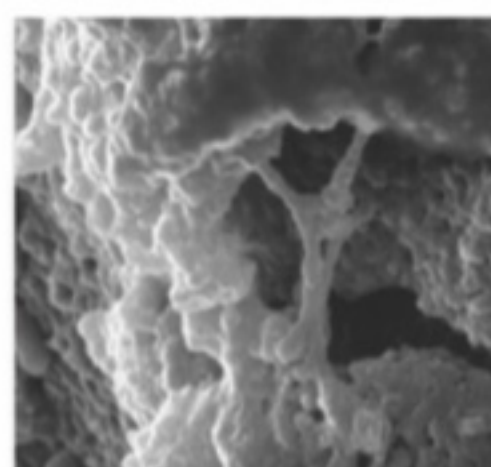
- Immediate loading
- Having stable and sealed biological connection
- Easy & risk-free surgery using stopper drills
- Complete and ease surgical kit of use
- Special design to platform switching
- Bone level implants in various diameters and lengths with the ability to be used in a variety of bone type
- Internal Hex Connection

Super Hydrophilic Surface

Micro Surface Design



SL2A



MTT Test Result

- Sandblasting Large Grit Acid etching Anodizing (SL2A)
- About 5-10 microns porosity
- Categorized in rough implant
- Osseointegration within 8 weeks

DPI-Full Kit - active, Drilling Sequence

Drilling Speed & Torque

- Point Lindemann, Initial Drill, Twist Drill : 1,200rpm / 35~45Ncm
- Cortical Tap / Profile Tap : 50rpm / 50Ncm
- Cortical Drill : 1,200rpm / 35~45Ncm (Conventional Loading case)



• Torque Ratchet

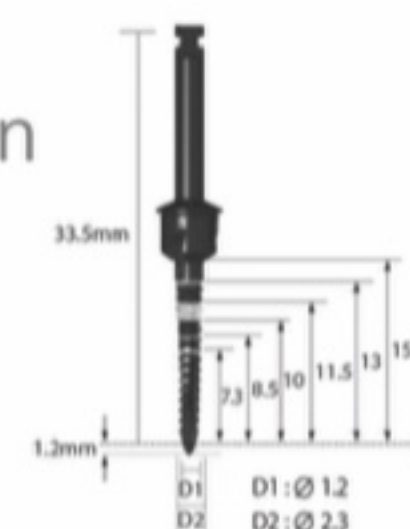


• Hex Driver



Length	Product name
10mm	HD1210S
15mm	HD1215S

Point Lindemann Drill



• Fixture Driver



Length	Product name
Ratchet (Short)	FD10R
Ratchet (Long)	FD15R
Contra Angle (Short)	FD05C
Contra Angle (Long)	FD05CL

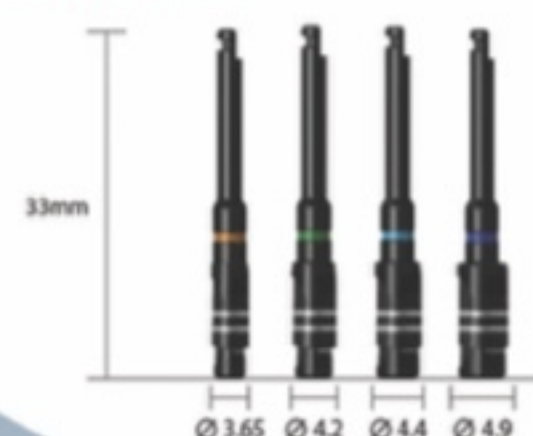
• Stopper



Stopper	3.0	4.0	5.0	6.0	6.6	7.0	8.5	10.0	11.5	13
Drilling Length(mm)	4.2	5.2	6.2	7.2	7.8	8.5	9.7	11.2	12.7	14.2
Product name	DS030C	DS040C	DS050C	DS060C	DS066C	DS070C	DS085C	DS100C	DS115C	DS130C

※ Stoppers cannot be connected to Ø4.9 Twist Drill(TSD49F) only

• Cortical Drill



Diameter	Product name
Ø3.65	CD35F
Ø4.2	CD40F
Ø4.4	CD45F
Ø4.9	CD50F

Initial Drill



DPI

DENTAL IMPLANTS
SYSTEM

Abutment & Screw

Static Strength above 45 kg

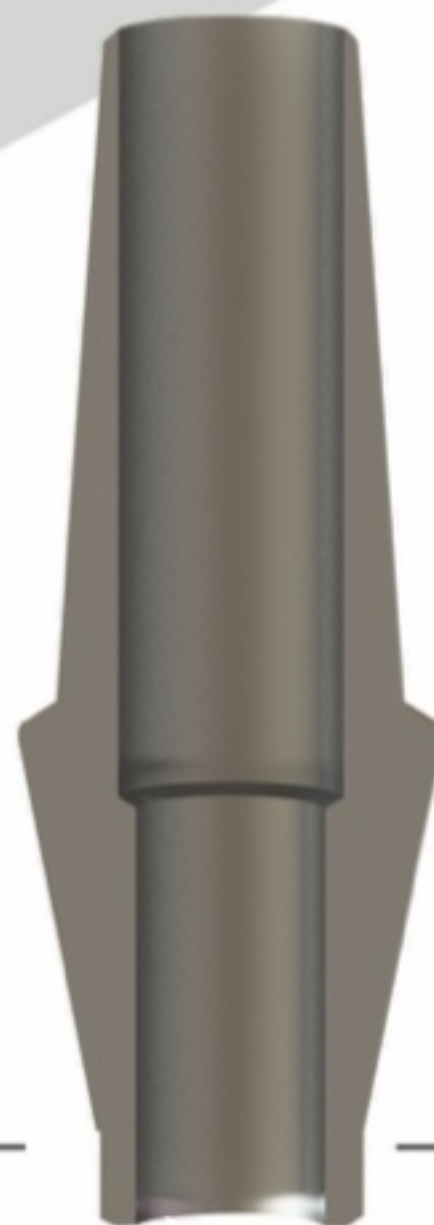


More than 5 million fatigue life cycle

- Smooth surface
- Various diameter : 4.5 , 5.5 mm
- Optimum P.H Different taper angle (15°, 25°)
- Various P.H: 5 , 7 mm
- Various C.H:1,2,3 mm
- Mono connection abutment can be used on any size of fixture
- Small but strong abutment screw
- Thicker abutment wall more favorable for path adjustment
- Biologic S-Line provide seamless Natural looking - Emergence profile
- 11° Taper connection.
- Hex-Type compatible connection
- Support the 1.2 implants hex driver.

OPI

DENTAL IMPLANTS
SYSTEM



TS System



DENTAL IMPLANTS SYSTEM



- **Ball Abutment**
Various diameter: 4.5, 5.5 mm
Various C/H: 2, 3, 4, 5 mm
Height: 12mm



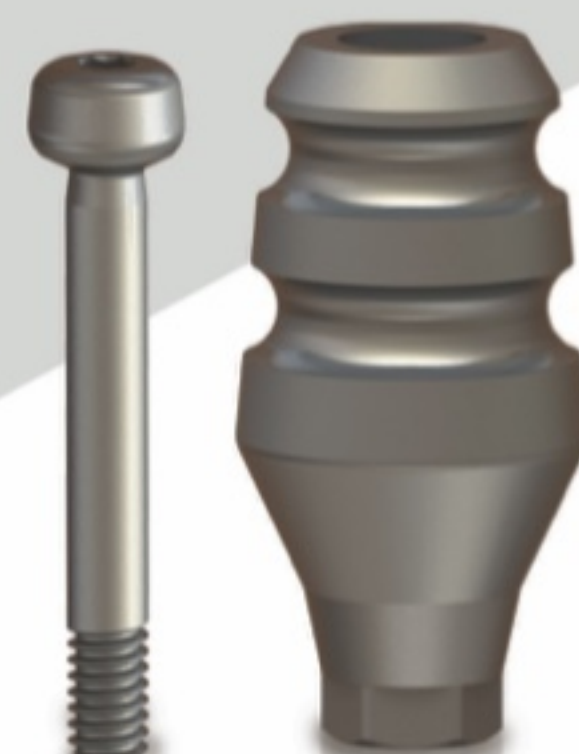
- **Analog**
Diameter: 4.5mm
Height: 12mm



- **Cover Screw**
Diameter: 4.5mm
Height: 6.3mm



- **Healing Abutment**
Various diameter: 4.5, 5.5 mm
Various C/H: 2, 3, 4, 5.6 mm



- **Impression Coping (Transfer)**
Various diameter: 4.5, 5.5 mm
Height: 11mm



- **Impression Coping (Pick-up)**
Various diameter: 4.5, 5.5 mm
Height: 11mm



- **UCLA Plastic Abutment**
Various diameter: 4.5, 5.5 mm



- **UCLA Chrome Plastic Abutment**
Various diameter: 4.5, 5.5 mm



DENTAL IMPLANTS SYSTEM

