

implant**swiss**

GUIDED
SURGERY SYSTEM



GUIDED SURGERY SYSTEM

Implantswiss Guided Surgery System is designed to provide reliable, precise and fast solutions in flapless surgery even in the most complicated indications.

- Safe
- Precise
- Less Surgery Time
- Minimal Invasive



GUIDED SURGERY SYSTEM

GUIDED SURGICAL KIT

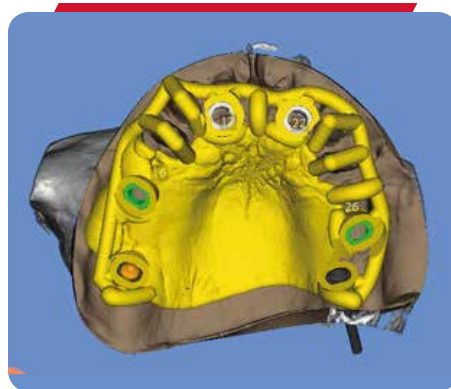
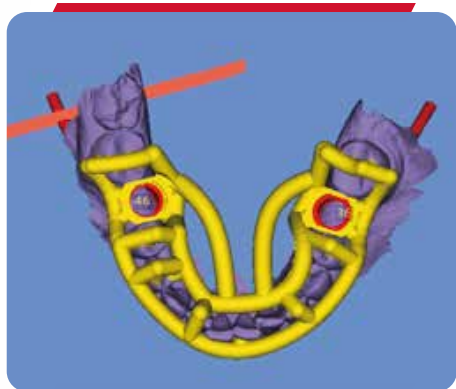
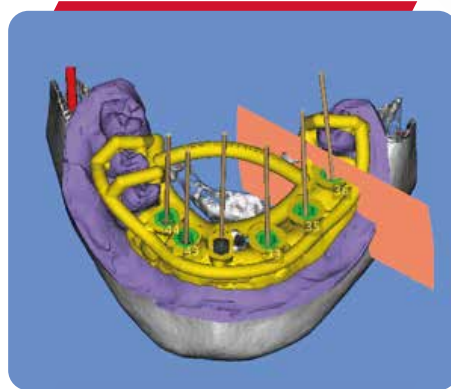
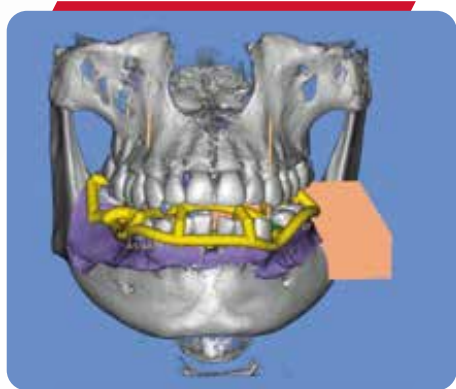
- One surgical kit for each implant size
- Understandable and easy surgical procedure



GUIDED SURGERY SYSTEM

VIRTUAL PLANNING

We have guide planning libraries in Smop, Exoplan, and Simplant Systems



GUIDED SURGERY SYSTEM

SLEEVE



S-SLVNW
Wide



S-SLVNL
Regular



S-SLVNLY
Narrow

HANDLE



S-SGSpW-NLY → Wide > Narrowly Handle



S-SGSpW-N → Wide > Narrow Handle



S-SGSpN-NLY → Narrow > Narrowly Handle



FIXATION PINS AND SCREWS



S-FIX15 S-FIX17 S-FIX20 S-FIXPIN20



“Easy to apply fixation pins and screws with a single drill“

TISSUE PUNCH



S-SGTPNLY
Narrowly Tissue Punch



S-SGTPN
Narrow Tissue Punch



S-SGTPW
Wide Tissue Punch



BONE MILL



S-SGBMNLY
Bone Mill Narrowly



S-SGBMN
Bone Mill Narrow



S-SGBMW
Bone Mill Wide



DRILLS



Point Drill
S-SGPD



Ø2.2 Drill
S-SGSD2208
S-SGSD2210
S-SGSD2212
S-SGSD2214



Ø3.3 Drill
S-SGTD3308
S-SGTD3310
S-SGTD3312
S-SGTD3314



Ø3.7 Drill
S-SGTD3708
S-SGTD3710
S-SGTD3712
S-SGTD3714



Ø4.3 Drill
S-SGTD4308
S-SGTD4310
S-SGTD4312
S-SGTD4314



Ø4.8 Drill
S-SGTD4808
S-SGTD4810
S-SGTD4812
S-SGTD4814



Ø5.5 Drill
S-SGTD5508
S-SGTD5510
S-SGTD5512
S-SGTD5514

GUIDED SURGERY SYSTEM

NECK DRILLS



S-SGND33



S-SGND37



S-SGND43



S-SGND48



S-SGND55

GUIDED SURGERY SYSTEM

DRIVERS

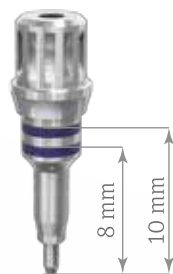
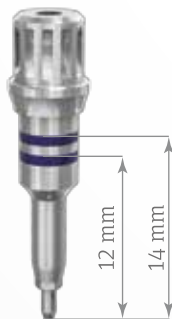
Bone Level Driver



Ø3.3 Bone Level Driver



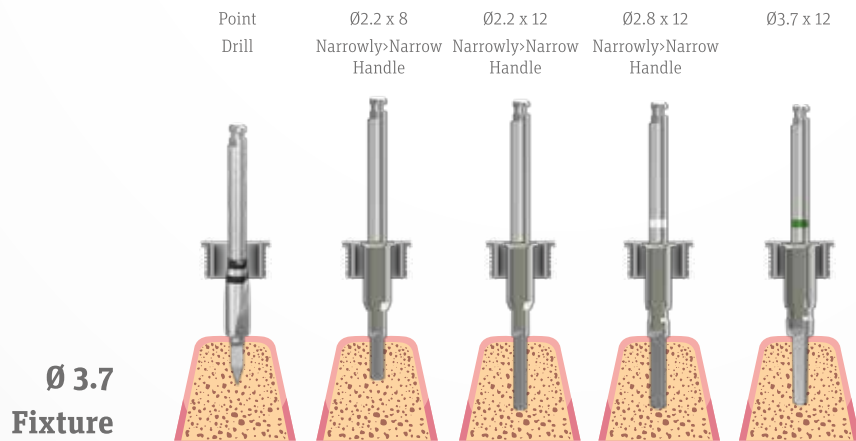
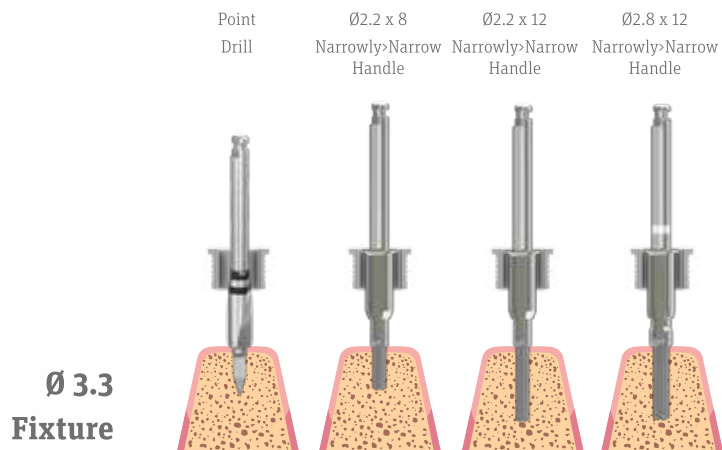
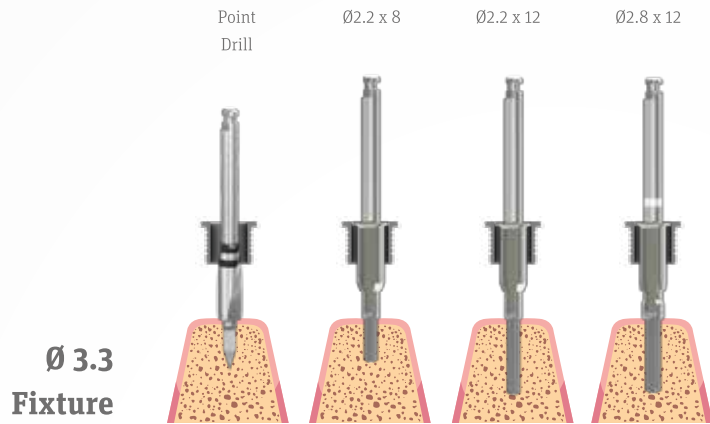
1.2 Hex Drivers



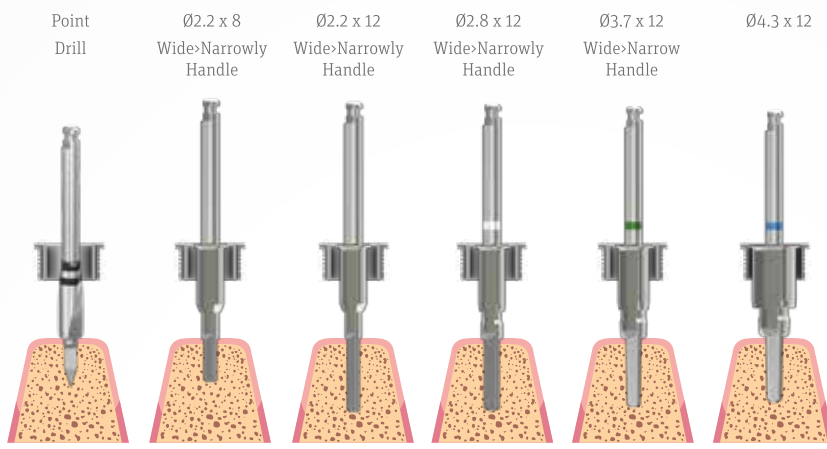
Depending on the implant size used, the rings should remain inside the sleeve.

Lorem ipsum dolor sit
amet, consectetur

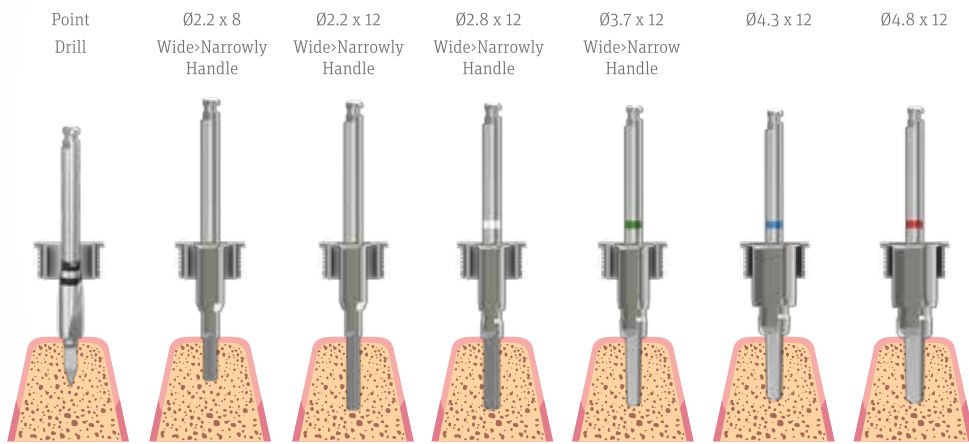
PROTOCOL



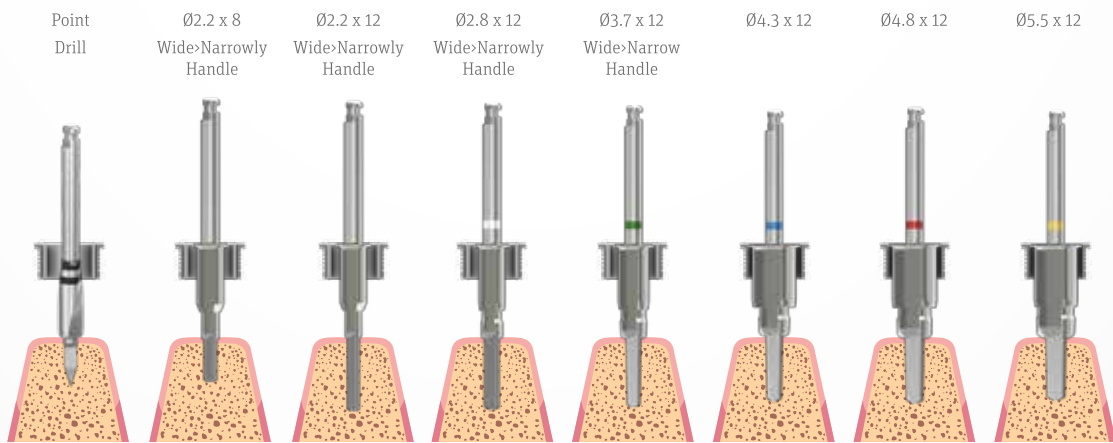
**Ø 4.3
Fixture**



**Ø 4.8
Fixture**

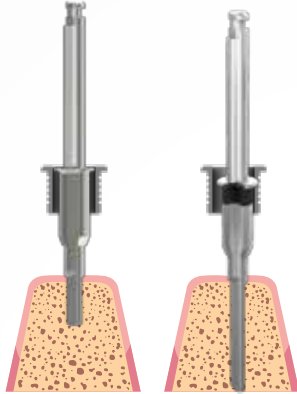


**Ø 5.5
Fixture**



Ø2.2 x 8

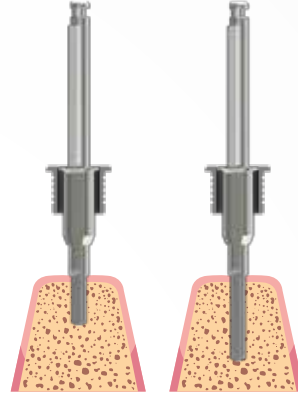
Ø2.2 x 14



Fix Pin

Ø2.2 x 8

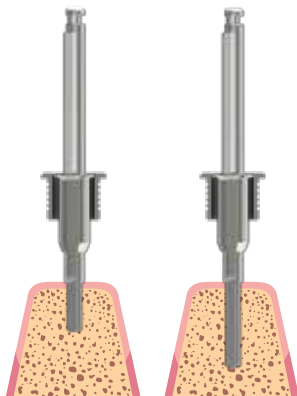
Ø2.2 x 10



Fix Screw 15

Ø2.2 x 8

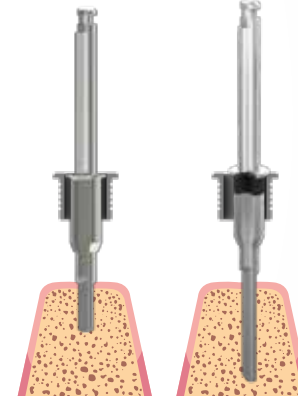
Ø2.2 x 12



Fix Screw 17

Ø2.2 x 8

Ø2.2 x 14



Fix Screw 20

